



# Chalet Baby Bear

## Chamonix information

Heights ranging from Mont Blanc at (4808m) to Le Brévent at 2525m. The Chamonix valley has 13 ski areas with almost 140 kilometers of pisted skiing and unlimited off piste.

**Sports**  
Skiing and extreme skiing, heli skiing, snowboarding, ice climbing.

In summer rock climbing, rafting, canyoning, mountain climbing and paragliding.

**Average Snow Levels**  
Monthly snowfalls from 100cm in December to 185cm in April.

UK to Geneva flight time 1.5 hours. Geneva to Chamonix transfer 1 hr.



Picture perfect and so cosy you may never want to leave, Chalet Baby Bear provides the ideal romantic getaway or family break. Adjacent to Chalet Amazon Creek, Baby Bear sleeps up to four guests in two delightful bedrooms with en-suites.

## Accommodation

Enjoy stunning views from the wonderful living and dining areas and from the spacious terrace. The chalet also boasts a superbly equipped modern kitchen. Its two double bedrooms combine a traditional chalet feel with luxurious design and finish.

Situated just a stones throw away from Chalet Amazon Creek, the two properties can be rented together fully catered for a party of up to 14 (please add £250 per person supplement). Baby Bear may also be rented on an accommodation only basis, with an early morning delivery of fresh bread, pastries and afternoon cakes.





## Chalet Baby Bear

### Overview

Sleeps up to 4 guests  
120 sq m living area over 2 levels

### Accommodation

Bedroom 1  
King size bed or Twin with en-suite bathroom with bath / shower

Bedroom 2  
King size bed or Twin with en-suite bathroom with bath / shower

### Facilities

- Champagne reception
- Fresh bread and pastries every morning
- Afternoon tea and cakes every afternoon
- Fully equipped luxury kitchen
- Large balcony accessible from dining area
- Chauffeured Land Rover vehicles
- Satellite television throughout the chalet
- DVD's, books, toys and games
- Outdoor terrace hot tub

### Finishing touches

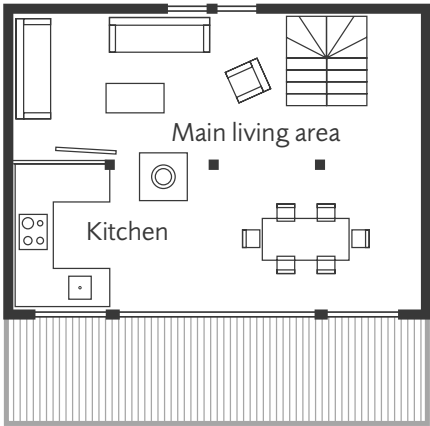
- Luxury bath robes and slippers
- L'Occitane bathroom products
- Flowers and daily newspapers
- Hairdryer in every bedroom

### Communications

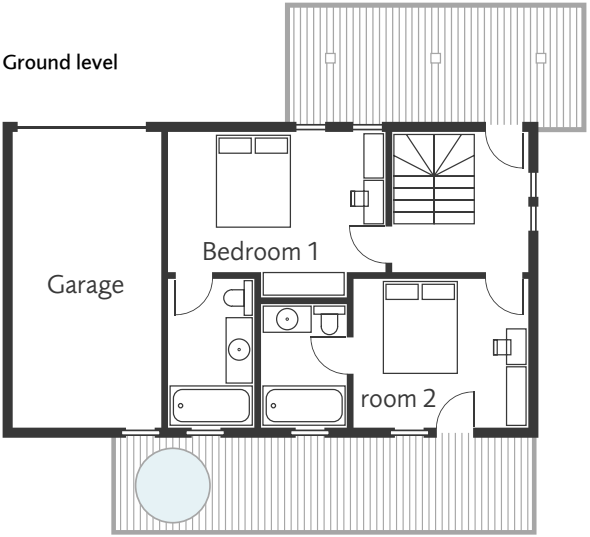
- Wi-Fi throughout the chalet



First level

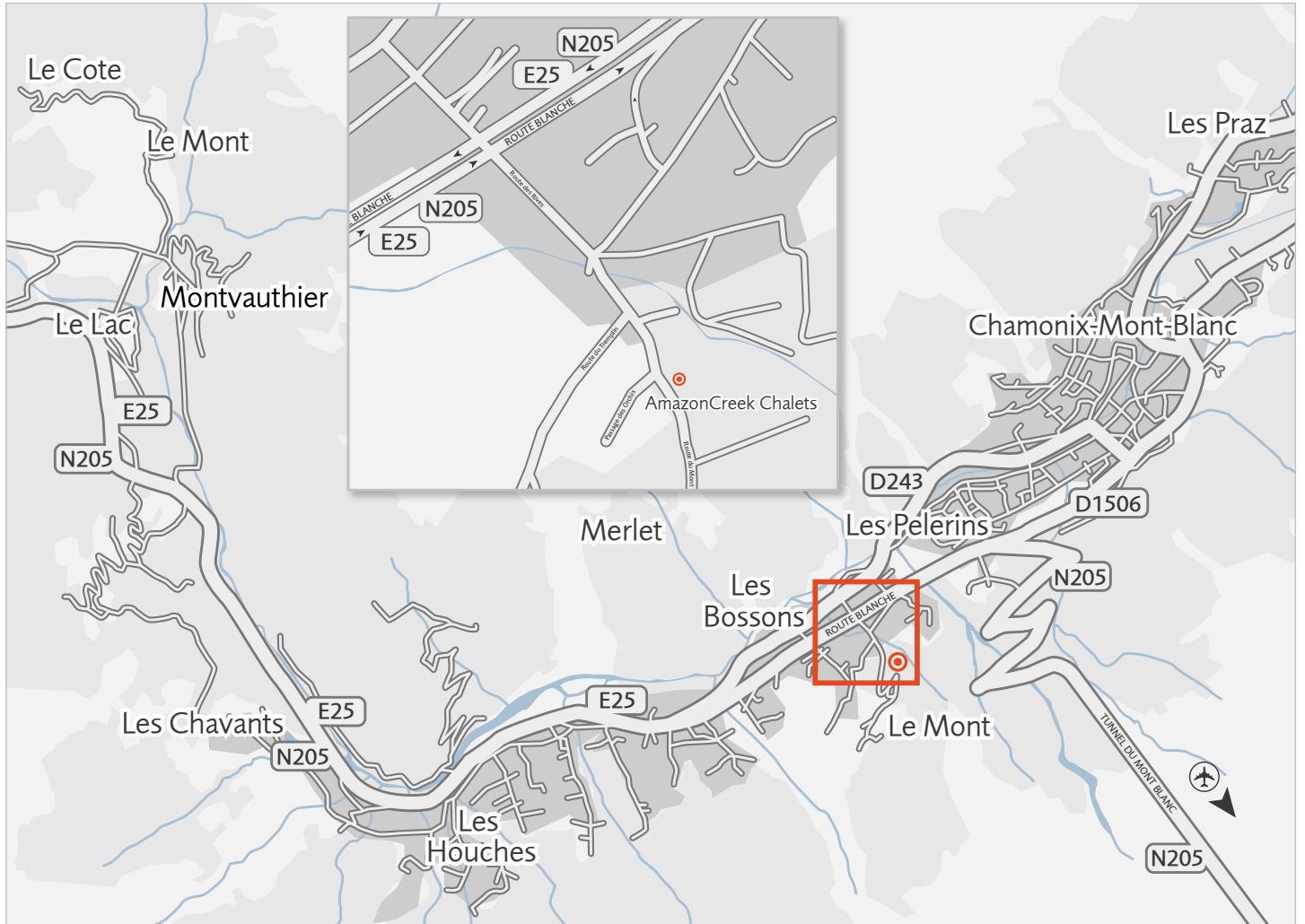


Ground level



NB: Both or either rooms can be covered to twin rooms





## Chamonix

### Chamonix information

Heights ranging from Mont Blanc at (4808m) to Le Brévent at 2525m. The Chamonix valley has 13 ski areas with almost 140 kilometers of pisted skiing and unlimited off piste.

### Sports

Skiing and extreme skiing, heli skiing, snowboarding, ice climbing.

In summer rock climbing, rafting, canyoning, mountain climbing and paragliding.

### Average Snow Levels

Monthly snowfalls from 100cm in December to 185cm in April.

UK to Geneva flight time 1.5 hours. Geneva to Chamonix transfer 1 hr.

### Chalet Baby Bear

165 Route du Mont

Les Bossons

74400

CHAMONIX

GPS: 45.8989706, 6.8402259

### How to get there

From Geneva airport (Swiss side) follow signs to France (be aware that some of these are fairly small)

After approx 10km you will cross the Swiss/French border

After crossing the border stay in the **right hand lane** and follow the signs to **Chamonix Mt Blanc**

**After approx 7km** the road splits. Take the **left hand lane** and following the signs to **Chamonix Mt Blanc**. This road will now take you all of the way to the Chamonix valley (approx 80km)

Once you have driven up the viaduct into the Chamonix Valley you will travel past Les Houches St Antoine exit. Keep going, past Exit 27 Graviers

Go through a small tunnel

Keep going straight ahead for approximately 2km

You will see a sign for exit 30

Take Exit 30 on your right, named Les Bossons / Glacier des Bossons.

Turn right at the stop sign onto 'Route des Tissieres'

Keep driving straight up the hill

Turn left onto 'Route du Tremplin'

Go Straight on until you get to a T junction and another stop sign

Turn right and drive for approximately 400m

Your Chalet is on your left, number 165 on the green letter box

Continue up the drive, Chalet Baby Bear is the second chalet on your left.