



# Villa Freya

## Sete information

In the Languedoc region on the south west coast of France. Sete has natural sandy beaches and over 20 km of newly built beach promenade.

**Sports**  
Watersports including water skiing, kayaking, sailing and diving.

UK to Montpellier flight time 1.5 hours. Montpellier to Sete transfer 40 mins.

TGV fast train Paris to Montpellier journey time 3 hours 30 minutes.



Villa Freya sleeps up to eight guests in four en-suite bedrooms. The villa highlights include a spectacular glass walled swimming pool, children's game room, cinema room and sauna.

## Accommodation

The combination of traditional local stone, wood and glass provide for a spectacular entrance. The light and airy open plan living area offers stunning sea views. The kitchen is fully equipped with utensils and there is a sound system, plasma television and DVD library in the lounge and dining room.

All bedrooms are suitable for double or twin occupancy and all have plasma televisions, DVD players and ipod docking stations. The luxurious en-suite bathrooms are brimming with L'Occitane products and fluffy bathrobes and towels for your comfort.

Children and big kids can enjoy table tennis, table football and other activities in the basement games room. Relax in the sauna or watch your favourite movie in the cinema room, both situated in the basement. Staff or nanny accommodation is also available should you require it.





## Villa Freya

### Overview

Sleeps up to 8 guests

400 sq m living area over 3 levels

2 Staff (additional bedroom for nanny/staff)

### Accommodation

#### Bedroom 1

King size/twin bed with en-suite bathroom with shower. Plasma and sound system.

#### Bedroom 2

King size/twin bed with en-suite bathroom with shower. Plasma screen and sound system.

#### Bedroom 3

King size bed or Twin with en-suite bathroom with bath and shower. Plasma screen and sound system. Balcony terrace over looking the Mediterranean.

#### Bedroom 4

King size bed or Twin with en-suite bathroom with shower. Plasma screen and sound system. Balcony terrace over looking the Mediterranean.

#### Lower ground floor

Games room with table tennis and table football. Cinema room and sauna.

### Facilities

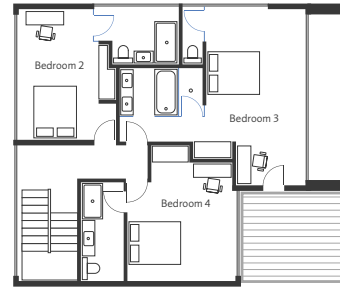
- 7 nights luxury accommodation for your chosen dates
- Dedicated service from our villa Manager
- Complimentary water sports programme including use of speedboat
- Champagne reception
- Welcome 'essentials' pack
- Daily delivery of breakfast bread and pastries (6 days)
- Flowers
- In-resort vehicle and driver
- Wi-fi, satellite television and sound systems throughout
- Fully air conditioned
- Terrace furniture and BBQ
- Staff accommodation

### Finishing touches

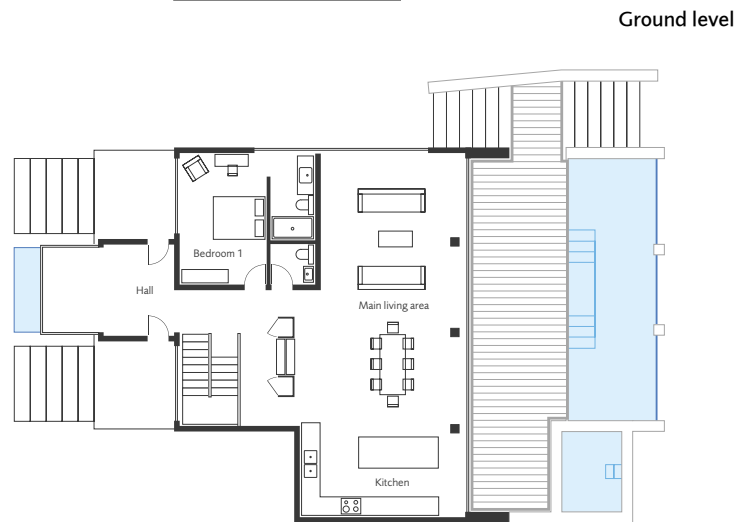
- Luxury bath robes and slippers
- L'Occitane bathroom products
- Hairdryer in every bedroom
- BBQ

### Communications

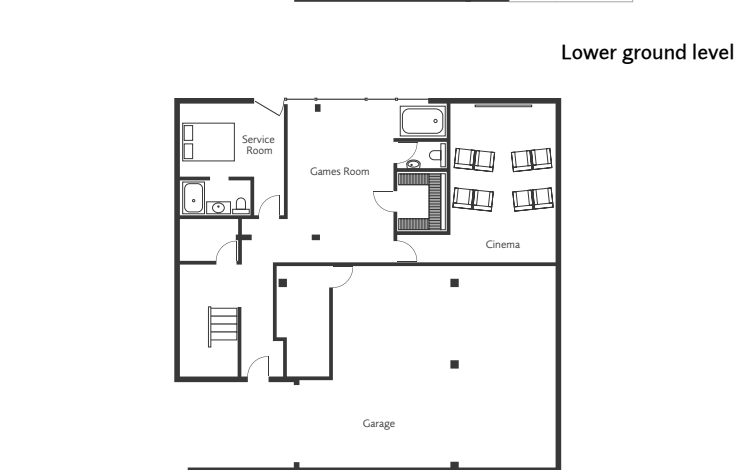
- Wi-Fi throughout the villa



First level

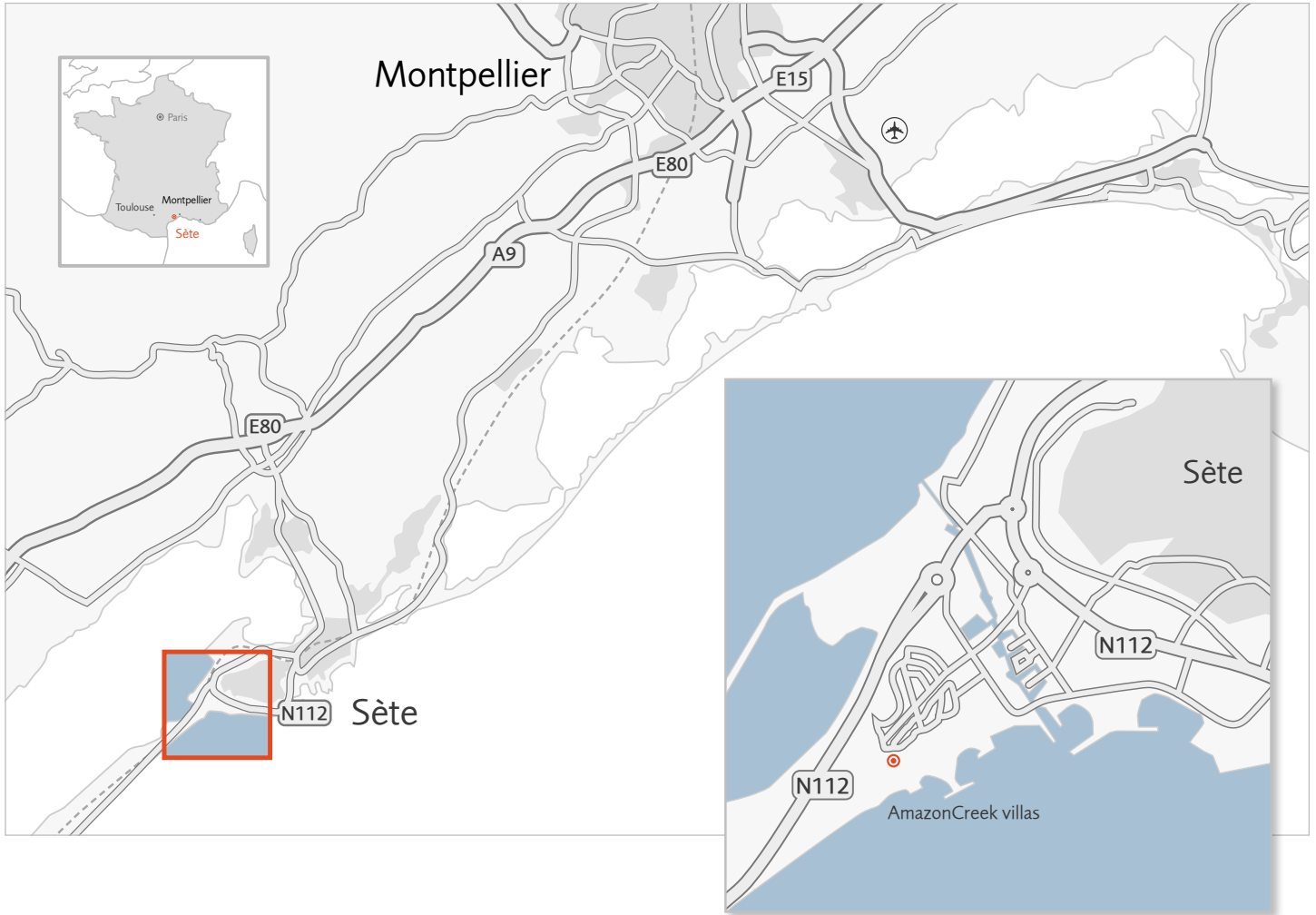


Ground level



Lower ground level





## Sète

In the Languedoc region on the south west coast of France. Sète has natural sandy beaches and over 20 km of newly built beach promenade.

UK to Montpellier flight time 1.5 hours. Montpellier to Sète transfer 40 mins.

TGV fast train Paris to Montpellier journey time 3 hours 30 minutes.

Villa Freya  
38 Chem la Brise Marine  
Zac De Villeroy  
34200  
Sète  
GPS: 43.5314982, 3.937007

### How to get there

From Montpellier head north west and at roundabout take 1st exit

Slight right at D172

At roundabout take exit onto the D66 ramp

Take exit to A9 / Grammont

At Rond-Point du Zenith take the 3rd exit to Sète / Beziers / Barcelona to A9

Merge onto A9 (partial Toll Road)

Take exit 33 to Sète / Frontignan / Balaruc (Toll Road)

Merge onto D600 (partial toll road)

At the roundabout with Chateau de Peyrade take signs to Beziers and continue to Sète centre / Beziers

Go over the train line and follow signs for Beziers / Chateau Vert

Continue straight following signs for Beziers / Adge onto Boulevard du Verden

At the roundabout take the 1st exit signposted Villeroy / Beziers

At next roundabout take the second exit to Les Quilles / Villeroy

At first set of traffic lights take the right turn onto Avenue du Ponant and continue

At mini roundabout go straight over and at next mini roundabout take the second exit

Turn immediately right onto Rue du Grec, then immediately left onto Rue de la Brise Marine and the Villas are immediately on the left behind white gates.